

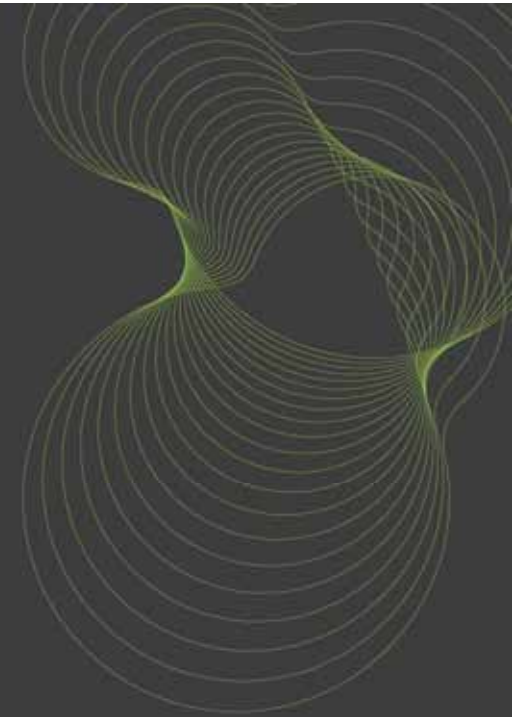
The logo for BRE, consisting of the lowercase letters 'bre' in a light green, sans-serif font.

bre

## The BRE Innovation Park

Dr Deborah Pullen

Director of Knowledge Exploitation



## BRE Innovation Park

*Different designs, construction systems, low carbon and renewable technologies, process, sustainability levels, etc*



# Standards for Sustainability

## Code for Sustainable Homes



- Energy / CO<sub>2</sub>
- Potable water
- Surface water runoff
- Materials
- Site waste / household waste
- Pollution
- Health and wellbeing
- Management
- Ecology





**Mandatory Standards**

- Waste
- Materials
- Water Surface Run-off

- Energy
- Potable Water Consumption

**Tradable Credits**

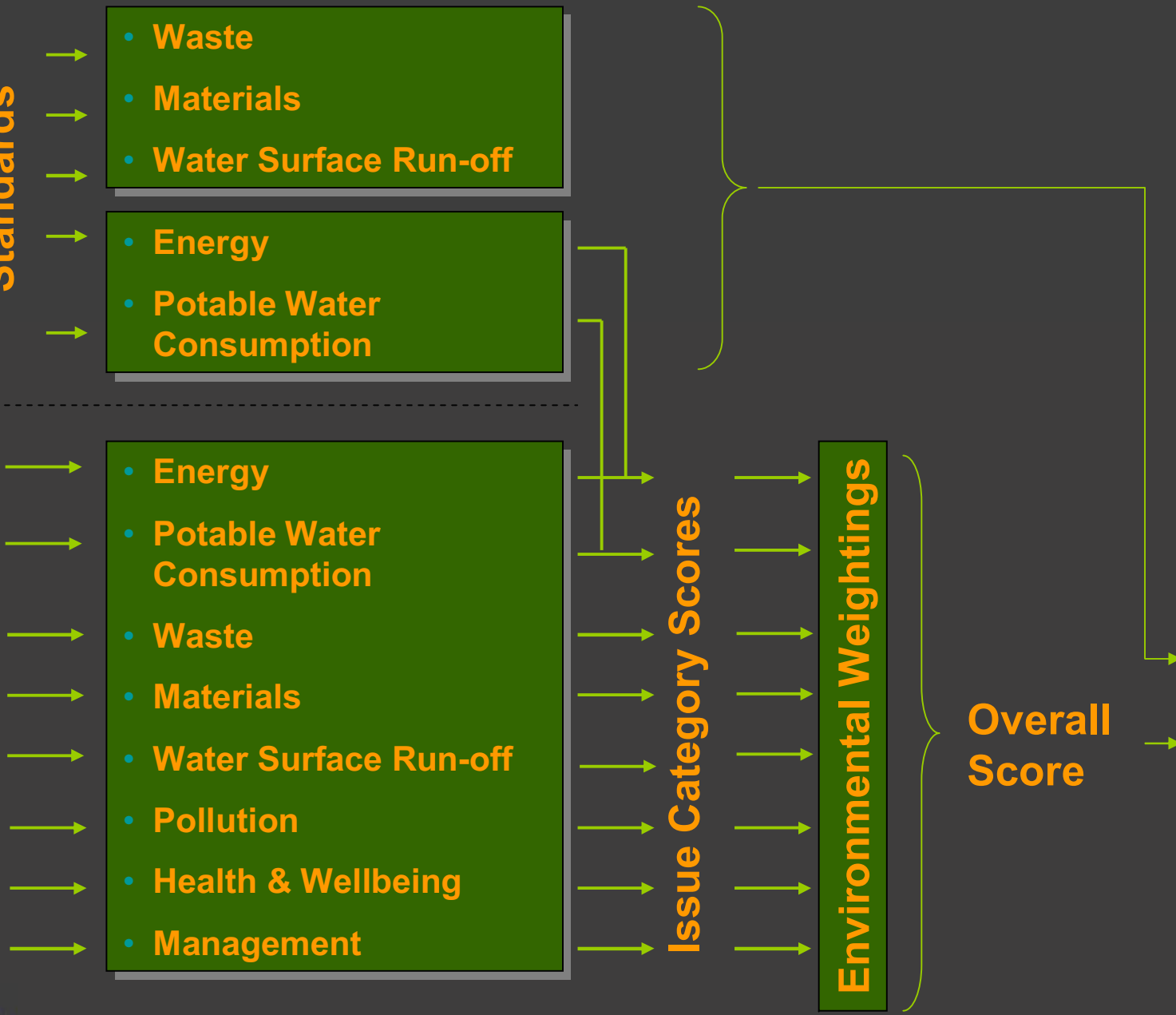
- Energy
- Potable Water Consumption
- Waste
- Materials
- Water Surface Run-off
- Pollution
- Health & Wellbeing
- Management

**Issue Category Scores**

**Environmental Weightings**

**Overall Score**

- Level 1
- Level 2
- Level 3
- Level 4
- Level 5
- Level 6



## Key Lessons Learnt

- Code for Sustainable Homes
  - *Building fabric and air-tightness*
  - *Energy and ventilation strategy*
  - *Site Considerations & Constraints*
  - *Community Development Strategy*
  - *Cost of achieving the Code*
- Skills and Training
- Systems Integration
  - *Compatibility of technologies*
  - *Reliability and maintenance*
  - *Whole life cycle cost / Life cycle assessment (LCA)*
- Smart Technologies
- End-user & Community Behaviour

# BRE Innovation Park – Scheme View

