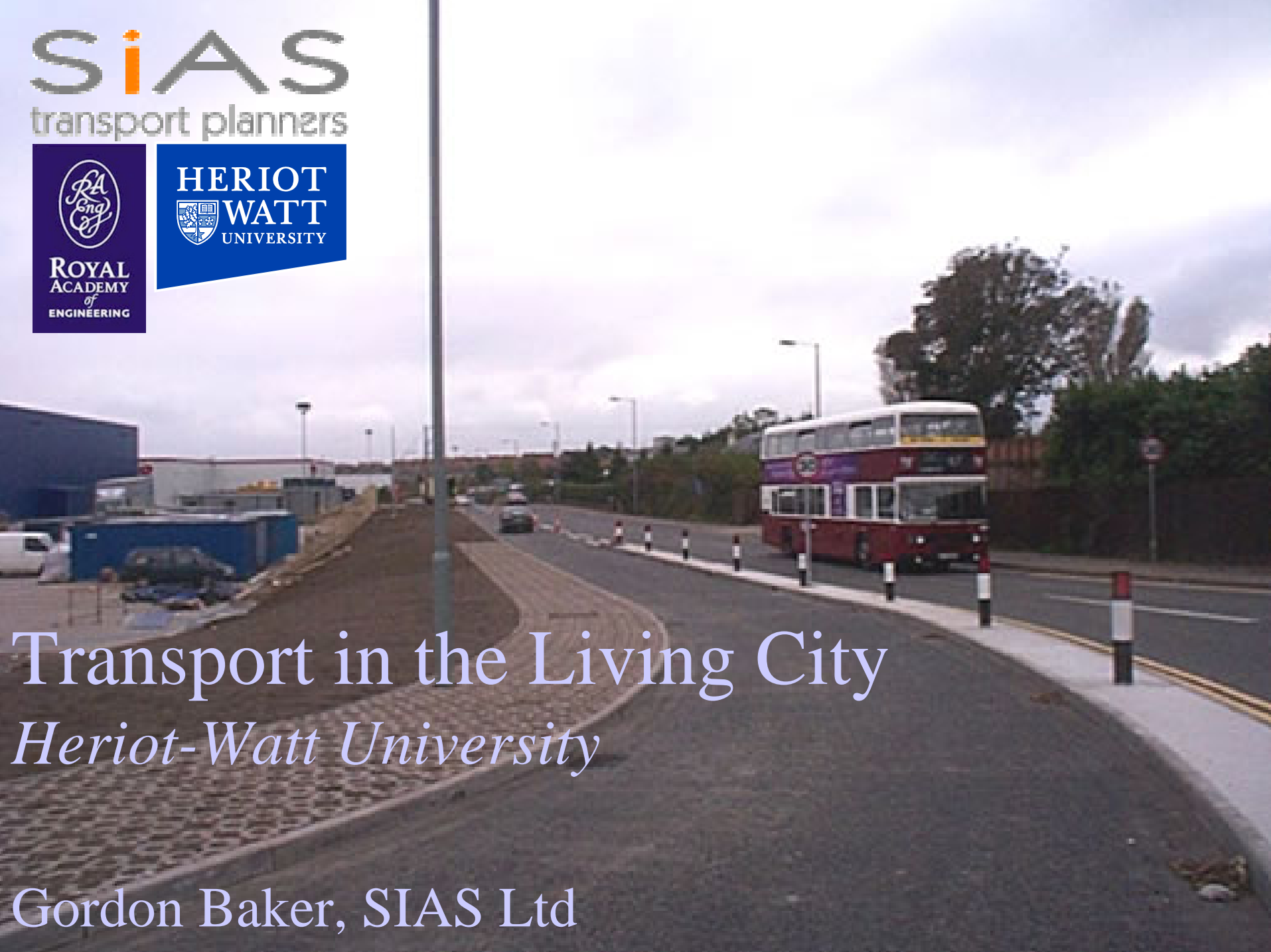


SIAS
transport planners



Transport in the Living City
Heriot-Watt University

Gordon Baker, SIAS Ltd



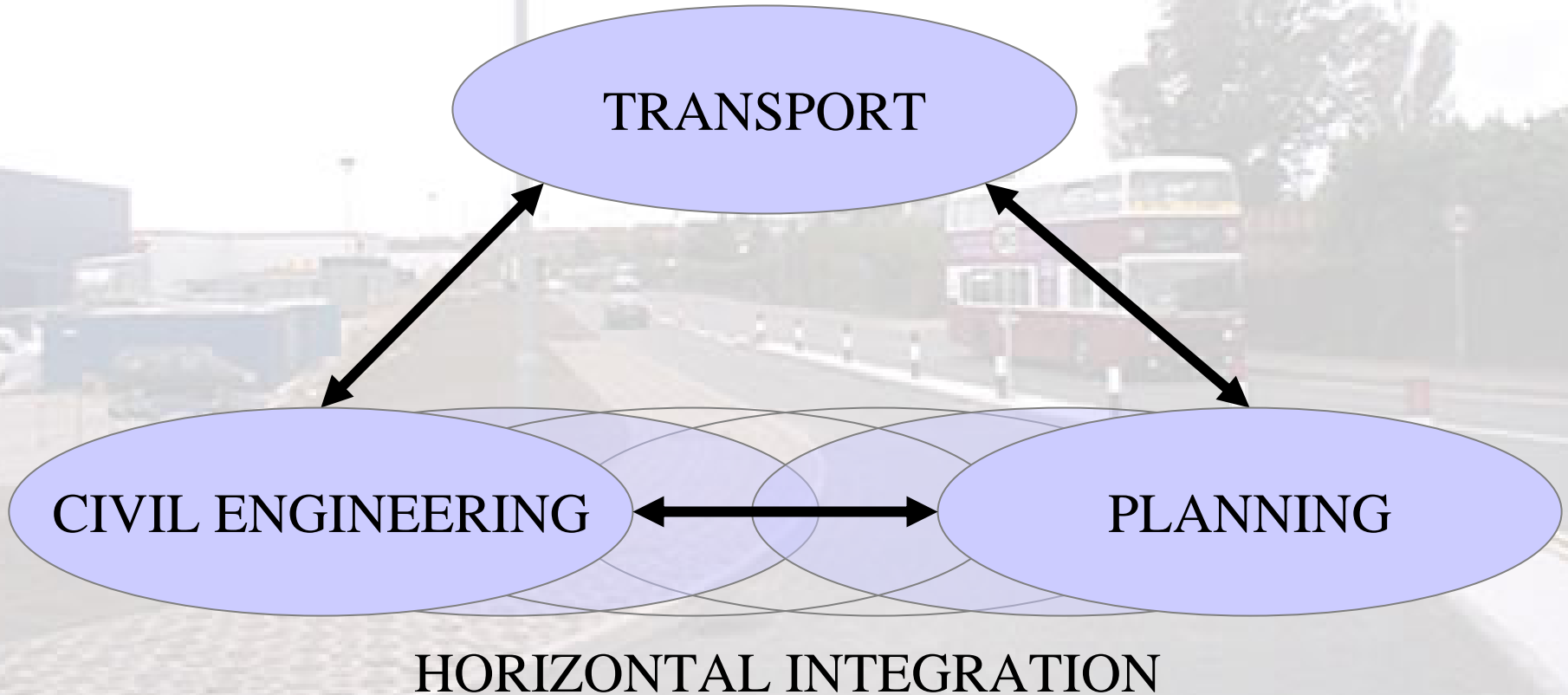
Transport

- Lack of coherent national policy
- Transport problems are complex outcomes to millions of simple decisions/choices
- Monitoring (and hence learning) is trivial
- Constantly “driven” off course
- **MISSION IMPOSSIBLE**

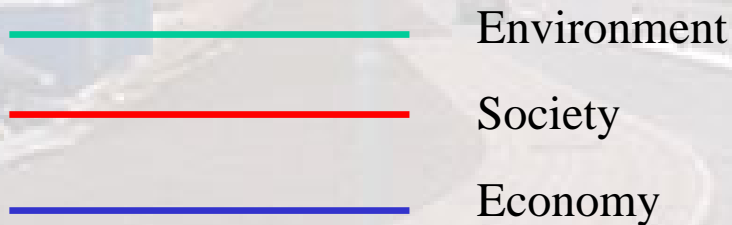
Case Study Material

- Framework document development
- Case study selection criteria
- City case study portfolios
- Transportation module

Framework Document



Case Study Selection Criteria



Triple bottom line



Sustainable Development

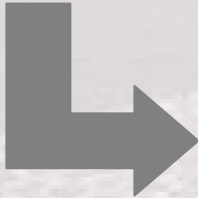
Sustainability Venn Diagram

Framework Document

Start:
Context for the project

End:
Manual for case
study users

Matrix



Framework Document; Matrix

Matrix 7.1: Classifying the Case Studies			
	<u>Level 1</u> Strategic Projects	<u>Level 2</u> Local and Free- Standing Transport Infrastructure and Investment	<u>Level 3</u> Development Related Transport Infrastructure
<u>Category A</u> Mode	Changes in Tax (fuel and road) New Rail Link	New Bus/Rail Station Bus Priority Measures	Additional Car-Parking for Park and Ride Bus Priority Signal Phasing Financial Contribution to e.g. LRT system or Quality Bus Corridor
<u>Category B</u> Infrastructure	New Air Terminals	Park and Ride Scheme Local Bypass	Local Road Widening New Junction Local Junction Improvements
<u>Category C</u> Technology	Telematics and Information System on Major Area Network or System e.g. RTCC	Electronic Road Signs Car Park VMS	Traffic Signal Upgrading to e.g. SCOOT operation Monitoring and Data Collection on Car-Parks

Case Study; IKEA

Ikea car chaos alert

Experts warn of gridlock when massive store opens

TRAFFIC experts today warned Ikea's first Scottish store would cause months of "guaranteed chaos" on the roads.

Plans to deal with the Swedish furniture giant's opening have been criticised as "inadequate" despite consultation with police.

And people living in Stranraer, Midlothian, fear months of traffic jams as thousands of customers flock to the store from November 4.

The decision to allow Ikea to build on a greenfield site has won with heavy criticism from environmental campaigners. They claim the lack of public transport combined with its proximity to the City Bypass is a recipe for disaster.

The emergency plans include providing an overflow car park, in addition to the Ikea car park which accommodates 1200 cars.

A warning line to enter Ikea will separate opening cars from southbound traffic.

And it is proposed the right turn lane on Leith Road from the City Bypass be scrapped.

That will mean motorists will have to drive under the bypass up to the next roundabouts, back onto Leith Road and enter via a slip road

which is likely to be clogged with bus traffic, says the store representative.

Janice Tennant, from the AA, said that even when traffic plans are in place, they will make little difference to what she described as months of "guaranteed chaos".

"From our experience of new Ikea stores, there will be thousands of cars queuing to get into the store and then stuck in getting overheard and breaking down," she added. "The chaos is guaranteed for a few months until everything settles down."

Wrong

David Spavin, chairman of TRANSPORT Scotland, said any of his proposals for the emergency strategy now would be too late.

"The strategy is in the wrong place. It should be closer to a major transport hub with extensive bus and rail services," he said.

"The police are preparing a 'special strategy' to deal with the expected transport problems, but it is inadequate," he added. "There will be inconvenience to residents but traffic will be monitored by the police." Spavin



PLANNING AHEAD: But traffic experts say preparations for Ikea's opening are inadequate

All clear at Ikea as first-day crush fails to materialise

ANDREW WALKER

IT WAS one of the most-hyped store openings in Scotland for years. But shoppers yesterday appeared to have heeded Ikea's advice to stay away to avoid gridlock on the roads.

Extra police, Red Cross volunteers and crush barriers were all in place as Ikea's first Scottish store opened for business at 10am yesterday at Stranraer, near Edinburgh.

But the anticipated rush - tens of thousands had been predicted to turn up - failed to materialise and only around 1,000 people were waiting for the doors to open.

Staff are preparing for their next big test. Most of the 15,000 Scots who travel to the nearest Ikea store at Gateshead make the journey at weekends. They are now expected to drive to the Edinburgh store in large numbers.

A steady stream of shoppers arrived at the bright-blue store yesterday and by lunchtime the overflow car park was filled to capacity. However, motoring organisations and police reported few problems or delays on surrounding roads, including the Edinburgh city bypass.

First in the queue yesterday were Elaine Barnes, 26, and

Her mother, Sylvia Hawthorne, 29, from Edinburgh, said: "She wants to pick her own furniture. She is very independent already."

Fraser Drinkwater, 19, and his fiancée, Gayle Perrie, 18, arrived at 7.45am, from their home in Stirling. They planned to spend around £1,000 to furnish their new home.

George Swan, 34, a postman, and his wife, Thea, 31, of Biggar, arrived early to avoid the traffic but found the roads were coping easily. I thought there would be big trouble. We drove to Penicuik, left our car and took a bus but the roads were fine."

Richard Arnot, 48, a firefighter, cycled to Ikea after a nightshift at Dalkeith fire station. He was planning to spend more than £2,000 furnishing a holiday cottage in Argyll.

After the opening ceremony, Sam Campbell, the provost of Midlothian, said: "I'm pleased Ikea had the foresight to come to Midlothian. We have lost our mining industry but now we are starting to rebuild."

Four hundred and fifty new jobs have been created here and that is a huge investment. We want to see Midlothian at the forefront of good jobs, housing and education. Ikea is now part of that jigsaw."



Police said that there were few problems on the roads

Janice Tennant, 23, who had pitched their tent outside the store on Monday evening. They received £1,500 of Ikea vouchers and said later their three-night camp had been worth it.

"We plan to spend a lot of money in the store. It was worth queuing for and the £1,500 is very welcome," said Ms Tennant, of Clydebank.

Among the other earlybirds in the queue was 11-week-old Alexandra Hawthorne - one of three generations of the same family who arrived at the store at 8.20am.

Case Study; B & Q

B&Q NEWCRAIGHALL

Reference: B3/2001/1



City Case Study Portfolio

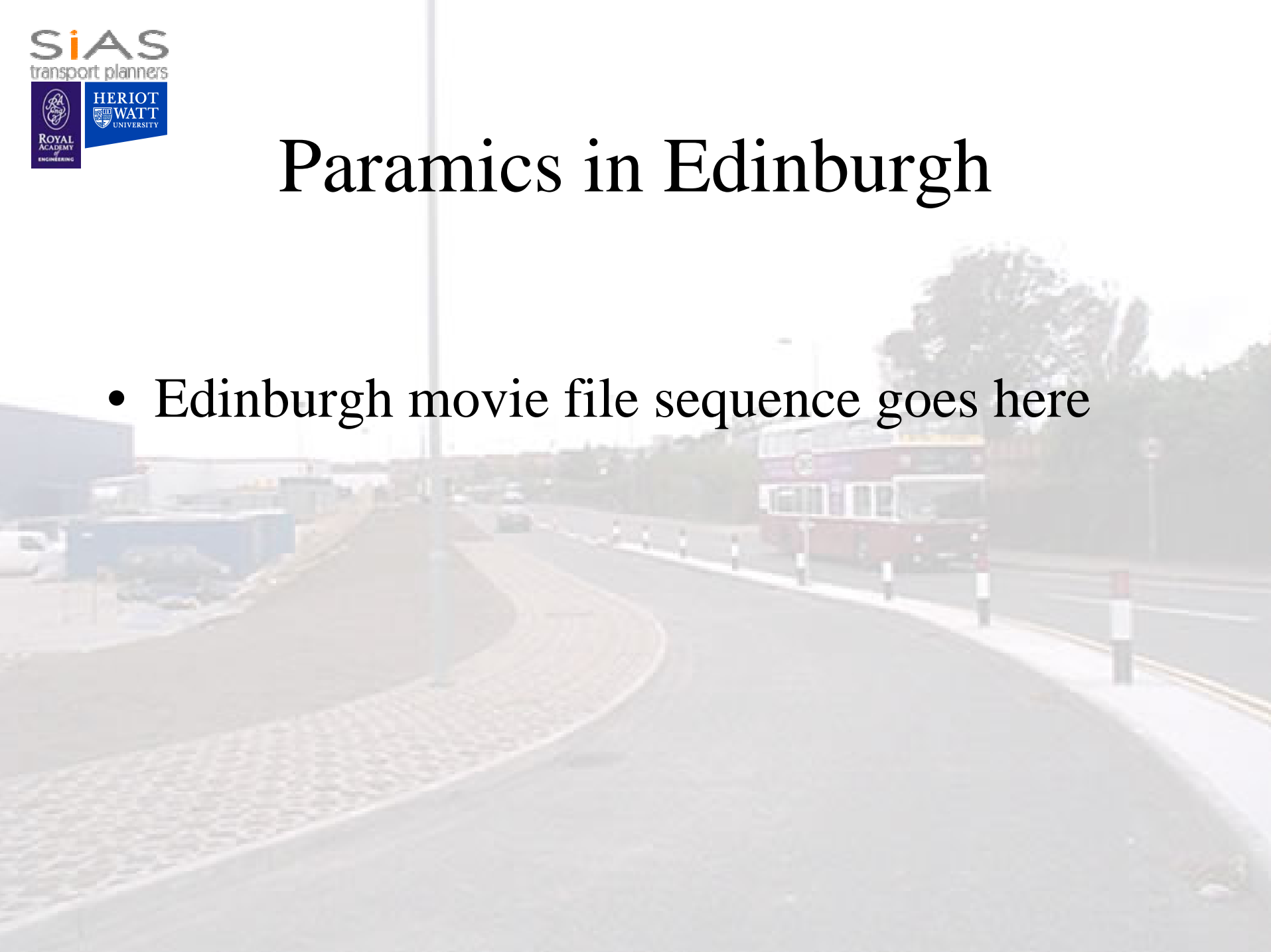
- Edinburgh
- Aberdeen
- Cambridge
- Bristol
- Plymouth

Transportation Module

- Framework Document will become Reference Framework
- Case Study Material will illustrate the issues
- SIAS will develop technical content and presentation media

Paramics in Edinburgh

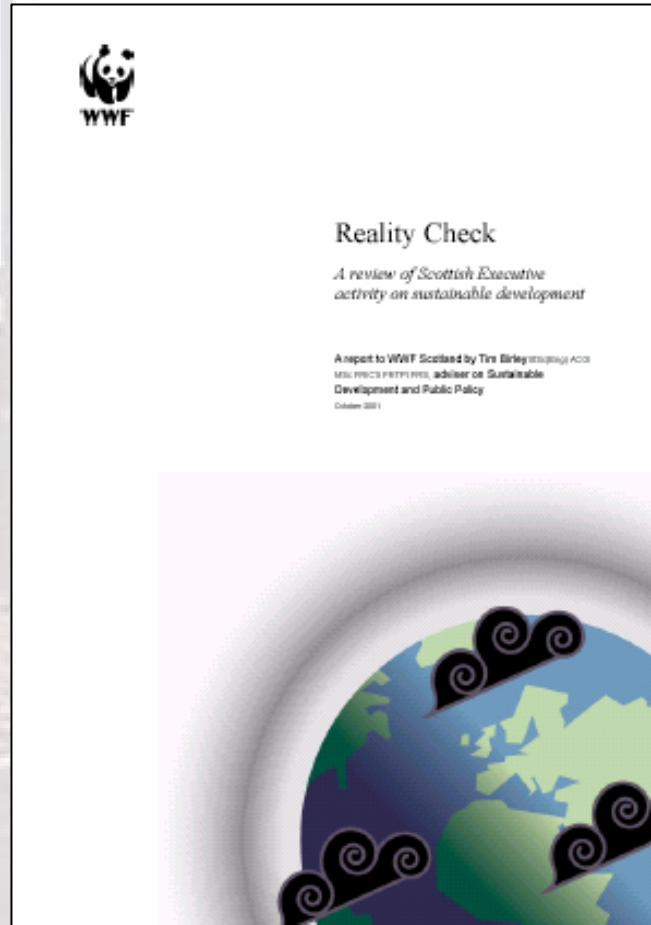
- Edinburgh movie file sequence goes here



Porritt's Challenge

- “Planet Savers”
- “Sustainable” OR “More Sustainable”

Scottish Progress ?



Transport and Sustainability

- Transport IS Movement
- Everyone moves ----> problems
- Connection between ALL movement issues and sustainability is NOT well understood
- Lifestyle change IS a necessity
- Legislative frameworks need to change